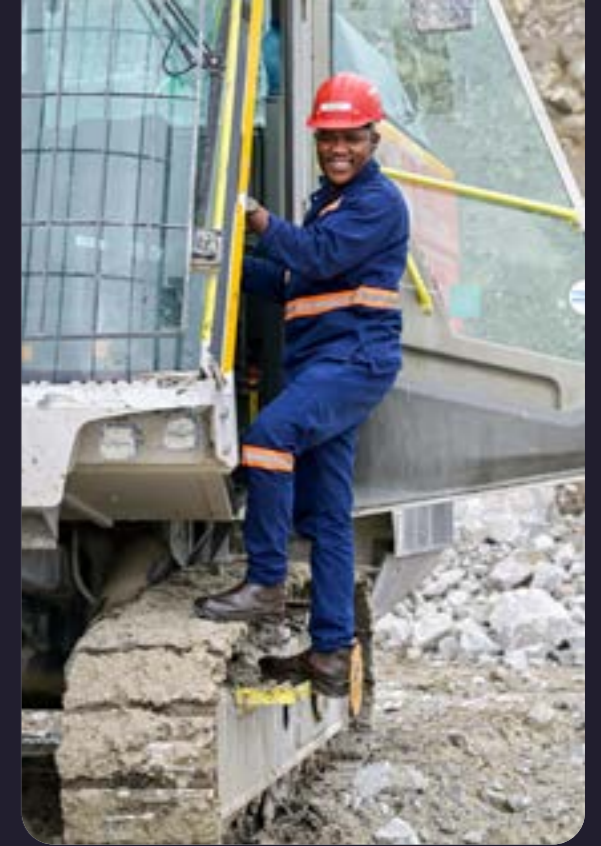


CHROMTECH



PROFILE
2026

A diversified industrial group connecting resources, industries, and opportunities

FROM CHROME TO A CONNECTED FUTURE

A diversified industrial group connecting resources, industries, and opportunities across Southern Africa.

Founded in 2006, Chromtech Holdings has grown from a specialised chrome recovery company into a diversified industrial group spanning mining, logistics, steel trading, building materials, and battery materials.

Our journey reflects a philosophy of continuous reinvention — recognising opportunity, strengthening operations, and building businesses that complement one another.

Today, Chromtech operates as a connected industrial platform focused on sustainable growth, operational excellence, and long-term value creation.

OUR PURPOSE

Chromtech's purpose is to build connected, future-ready businesses that create value across industries and communities.

We operate with integrity, accountability, and respect for both people and the environment.

Our governance framework is supported by ISO certifications (9001, 14001, and 45001) and a strong commitment to BBBEE principles and responsible development.



LOOKING AHEAD

As the Group continues to grow, Chromtech is investing in people, technology, and sustainability. From expanding our battery materials footprint to increasing logistics capacity at Bleskop Rail and scaling production through the Thaba Joint Venture, the Group is building a platform for the future.

Chromtech today is more than a mining company – it is an industrial network connecting resources, industries, and opportunity.

Our evolving portfolio

Chromtech's strength lies in a group of interconnected businesses that support one another across the industrial value chain.

MINING AND METALS RECOVERY

The foundation of the Group, focused on chrome, platinum group metals (PGMs), and efficient mineral recovery technologies.



BUILDING MATERIALS

Through Dukathole SA, Chromtech manufactures high-quality cementitious bricks and pavers supporting infrastructure and construction across South Africa.



STEEL TRADING

Metals and Alloyed Steel Traders (MAST) connects South African industry with international supply chains for specialised steel and aluminium products.



RAIL AND LOGISTICS

The commercialisation of the Bleskop Rail Siding is expanding regional bulk transport capability for mining and industrial commodities.

BATTERY MATERIALS

Our investment in Thakadu Battery Metals positions Chromtech within the fast-growing global supply chain for battery-grade nickel sulphate used in electric vehicle technology. Together, these sectors form a diversified industrial platform designed to drive sustainable growth across multiple markets.



Mining and treatment



Mining remains central to Chromtech's success. The Group is recognised for efficient plant design, operational discipline, and long-standing partnerships within South Africa's mining sector. Through our mining subsidiary, Limberg Mining Company (LMC), Chromtech is entering a new phase of growth with the Thaba Joint Venture with Sylvania Metals.

Once fully commissioned, the operation will produce approximately **13 000 oz of 4E PGMs** annually and **420 000 tonnes** of chromite concentrate per year, unlocking value from both historical dumps and new ore bodies.

This development marks an important milestone in Chromtech's evolution from recovery-focused operations into a multi-metal enterprise.



Battery materials

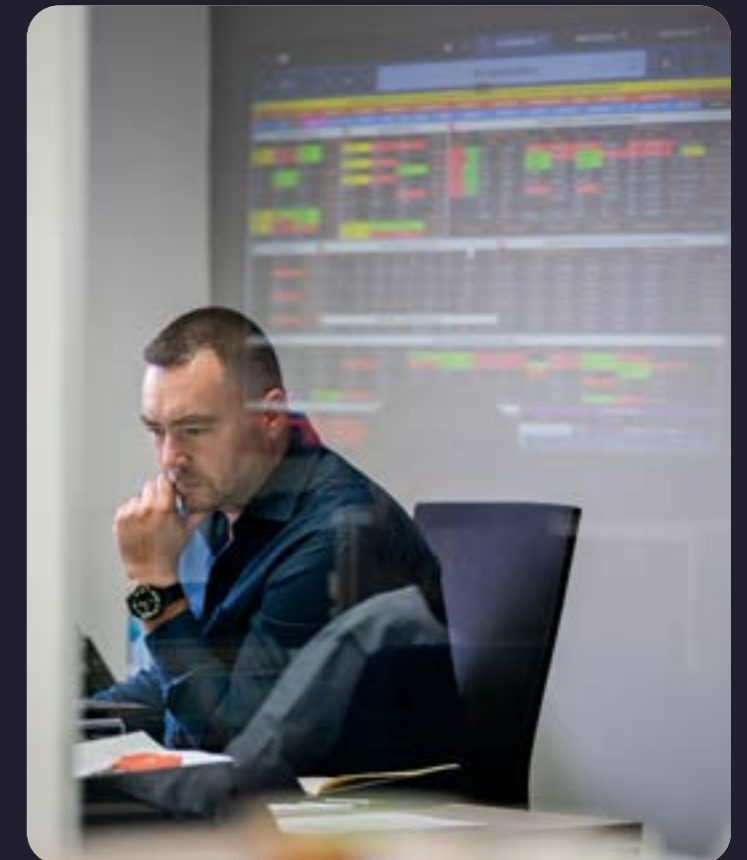
THAKADU

GROWTH IN BATTERY MATERIALS

Chromtech's partnership with Thakadu Battery Metals reflects our strategic entry into the clean-energy economy.

Thakadu produces battery-grade nickel sulphate, a critical component used in electric vehicles and hybrid technologies.

This investment positions the Group within the rapidly expanding global supply chain for battery materials while supporting the transition to renewable energy and green mobility.



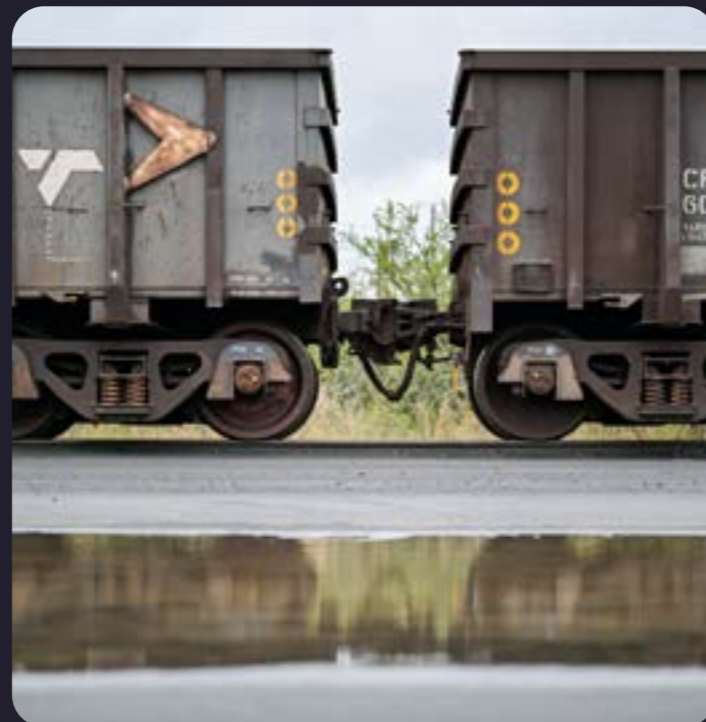
Rail and logistics



RAIL AND LOGISTICS

Bleskop Rail and Logistics forms an important part of Chromtech's diversification strategy. The facility is being commercialised as a logistics hub capable of handling up to 100 000 tonnes of bulk product per month.

By strengthening transport capacity between mines, markets, and ports, Bleskop supports both Chromtech operations and third-party industry partners.



Building materials



BUILDING MATERIALS

Through Dukathole SA, Chromtech contributes to South Africa's infrastructure development. With operational hubs in Gauteng, the Eastern Cape, and the Western Cape, Dukathole produces durable cementitious bricks and pavers used in construction projects nationwide.

Modern production systems ensure reliable quality while supporting more sustainable building solutions.



Steel and trade



STEEL AND TRADE

Metals and Alloyed Steel Traders (MAST) strengthens Chromtech's trading capability by sourcing and distributing specialised steel and aluminium products.

By linking local industries to global suppliers, MAST reinforces Chromtech's role within international industrial supply chains.



Social investment



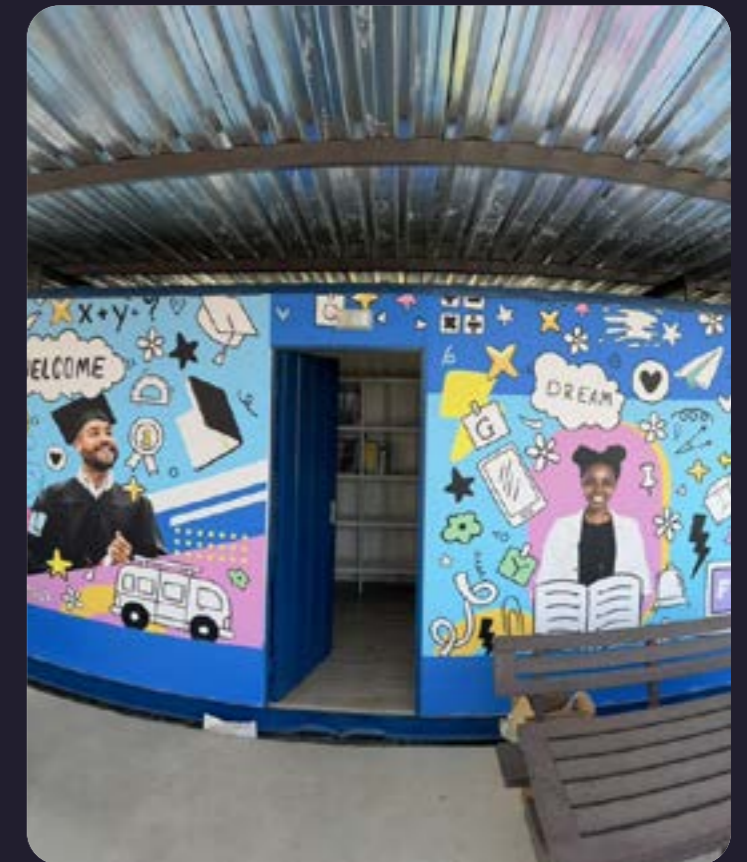
SOCIAL INVESTMENT

Chromtech believes that sustainable business success must be accompanied by meaningful social impact. Our community initiatives focus primarily on education, skills development, and local upliftment in areas surrounding our operations.

The Titali Initiative, Chromtech's flagship non-profit programme, places education at the centre of community development. Through school libraries, computer laboratories, and leadership programmes, Titali expands access to learning and digital opportunity. Skills development is also a core focus.

Chromtech has invested in apprenticeship programmes that train young artisans in critical engineering trades, helping to address regional skills shortages while creating long-term employment opportunities.

Through these initiatives, Chromtech continues to invest in people, knowledge, and the communities that support our operations.



CHROMTECH

Corporate headquarters

Ground Floor, Building 31, The Woodlands Office Park
Woodlands Drive, Woodmead
Johannesburg
South Africa

Contact

Telephone: +27 11 035 3950

Email: admin@chromtech.co.za

www.chromtech.co.za